

## 20-Minute Fire-Trim Moulding Installation Instructions

These installation instructions must be followed when Fire-Trim clips and moulding are included with the door. Fire-Trim moulding may be specified on DCL-20 or 20-minute positive pressure doors when the visible glass of the lite exceeds 1,296 sq. in. or when 5/16" Firelite® Plus glass is used. In order for doors with Fire-Trim moulding to receive a label, they must be installed with Firelite Plus glass. These installation instructions are shipped with all doors using Fire-Trim moulding.

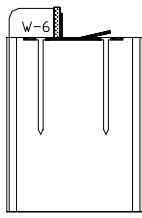


Fig. 1

To install the glass in the field, the glazer must first remove the packaged side of the wood moulding kit. **(See figure 1)**

Note: Total area of openings not to exceed 2,864-sq. in. of visible glass or one continuous dimension of 36" W or 81-1/4" H.

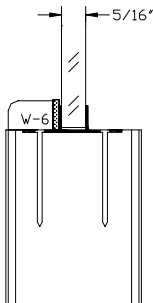


Fig. 2

Place the 5/16" Firelite Plus glass in the opening and bend the metal tabs up to secure the glass.

The tabs are easily bent up or down using a wood block and carefully tapping the metal tabs down against the glass. **(See figure 2)**

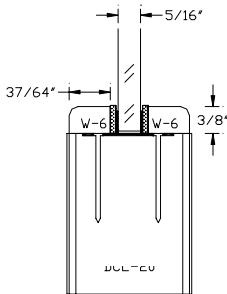


Fig. 3

Nail the packaged, prefit moulding with the attached intumescent into place to finish the opening. The moulding is most easily installed by securing the narrow pieces of the moulding first. **(See figure 3)**

