

TECH UPDATE

Canada Trim-Lite System for 20-Minute Fire Doors Requiring Hose Stream

The Canada Trim-Lite Moulding 20-minute lite system allows Marshfield DoorSystems to offer a flush (W-6, W-7, or W-8) or lipped (W-2 or W-3) bead moulding profile on 20-minute fire doors that require hose stream testing. Canada and all other areas that still require 20 minute fire doors with 1/4" wired glass to pass the hose stream portion of fire testing require the use of Marshfield DoorSystems' Trim-Lite system.

The benefits of the system:

- The moulding will be consistent and uniform with all other Marshfield DoorSystems doors on the project.
- The installation is quick and easy.
- The clips are factory installed so an extra bag of accessories cannot be lost.

This system offers the following features:

- We are able to use a flush or lipped beaded lite moulding.
- It is approved with ITS-WH and UL.
- Most species of wood can be used.
- It can be used on any 20-minute fire door except our X-Ray and Stile and Rail doors.
- The 1-1/4" X 1-1/4" clips will be factory installed with moulding applied fixed on one side, packaged on the other.
- Trim-Lite is a Marshfield DoorSystems' system enabling our distributors to buy the clips separately.

Some of the requirements of the system:

- Must have a clip within three (3) inches from a corner, no more than six (6) inches apart with a minimum of two (2) clips per side.
- Maximum total visible glass size is 1296 square inches per leaf with a maximum width of 36 inches and a maximum height of 54 inches.
- Must be installed with DAP™ - Acrylic Latex Caulk with Silicone. The caulking is **NOT** supplied, but can be purchased at any local hardware store or home center.
- Must be installed with ITS-WH or UL listed 1/4" wire glass.
- For non-rectangular lights W-2 or W-3 wood bead must be used.



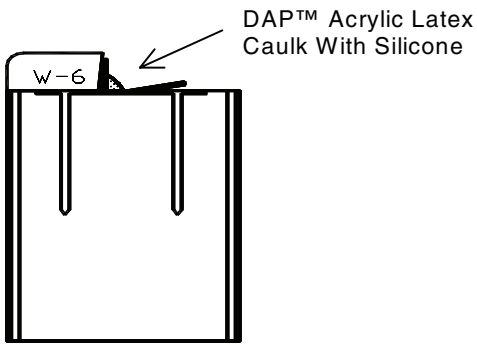


Fig. 1

To install the glass in the field, the glazer must first remove the packaged side of the wood moulding kit. A 1/8 to 1/4 inch bead of DAP-Acrylic Latex Caulk with Silicone is applied in the corner made by the wood moulding and the door. (See figure 1). The caulking is not supplied, but can be purchased at a local hardware store or home center.

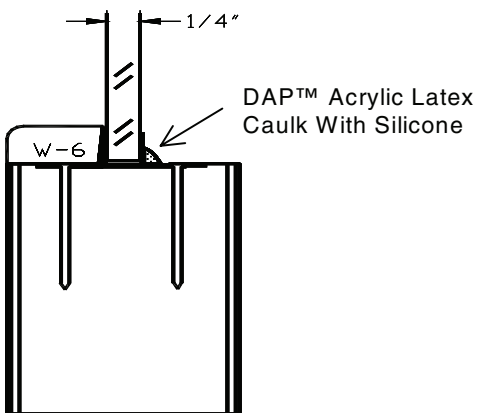


Fig. 2

The glass is placed in the opening and the metal tabs are bent up securing the glass. (The tabs are easily bent up or down using a wood block and carefully tapping the metal tabs down against the glass.) Place another 1/8 to 1/4 inch bead of DAP-Acrylic Latex Caulk with Silicone in the corner made by the glass and the door. (See figure 2)

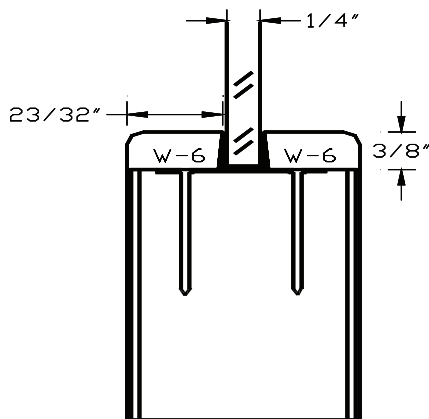


Fig. 3

The packaged prefitted moulding is then nailed into place to finish the opening. The moulding is easily installed by securing the narrow pieces of the moulding kit first. Do not remove excess caulk when it is wet. Let the caulk set up so when wiping the excess it does not fill the open grain of the wood which would affect the factory or field finish. (See figure 3)

